

Material specification **ALUMINUM DEVICES**



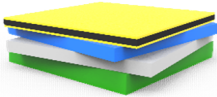
Plate and platform connectors made of stainless steel with shapes registered by EUIPO under the number 004426500.



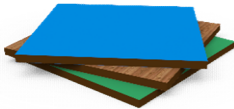
Construction poles made of Ø89 mm round profiles with internal reinforcement, anodized or powder coated. Shape registered by EUIPO under number 003715507.



Construction poles made of 90x90 mm square profile with internal reinforcement, anodized or powder coated. Shape registered with EUIPO under number 003715507.



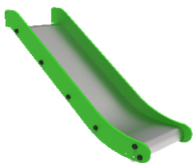
Boards made of high-density polyethylene HDPE, resistant to UV radiation, frost, moisture and acts of vandalism.



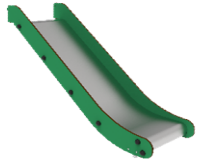
Boards made of HPL, resistant to UV radiation, frost, moisture and vandalism.



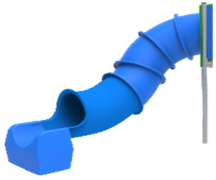
Platforms made of aluminum profiles with anti-slip surface.



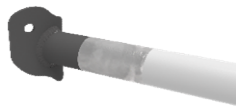
Slides made of AISI304 stainless steel, 2 mm thick.
The sides of the slide are made of high-density polyethylene HDPE.



Slides made of AISI304 stainless steel, 2 mm thick.
The sides are made of HPL boards.



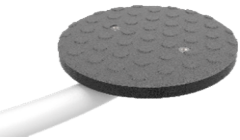
Slide made of colored polyethylene PE resistant to impacts and scratches.



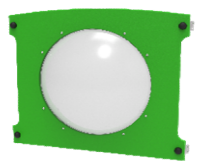
Metal elements made of S235JR steel, cleaned in the process
sandblasted, protected against corrosion by
powder coating painting with zinc primer.



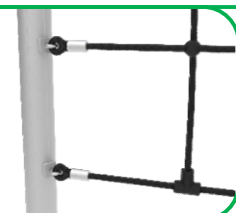
Metal elements made of AISI304 stainless steel
resistant to weather conditions.



Steps made of HDPE anti-slip plate.



Hemispheric window with a diameter of 500 mm made of transparent polystyrene PS.



Rope elements made of polypropylene ropes with a diameter of 16 mm
with a steel core. Rope ends clamped in aluminum fittings,
connecting elements made of polyamide PA.



Chains made of stainless steel, certified, preventing
finger jam.



"Birdnest" seat **S4** made of polypropylene ropes with a diameter of 16 mm with a steel core. Steel frame braided with shock-absorbing rope. Stainless steel chains preventing finger jam.